

# OYSTER/JUBILEE

For the Oyster/Jubilee bracelet, there are two ways to adjust its size. You might only need to use one or perhaps if your wrist is very small, you may need to use both.



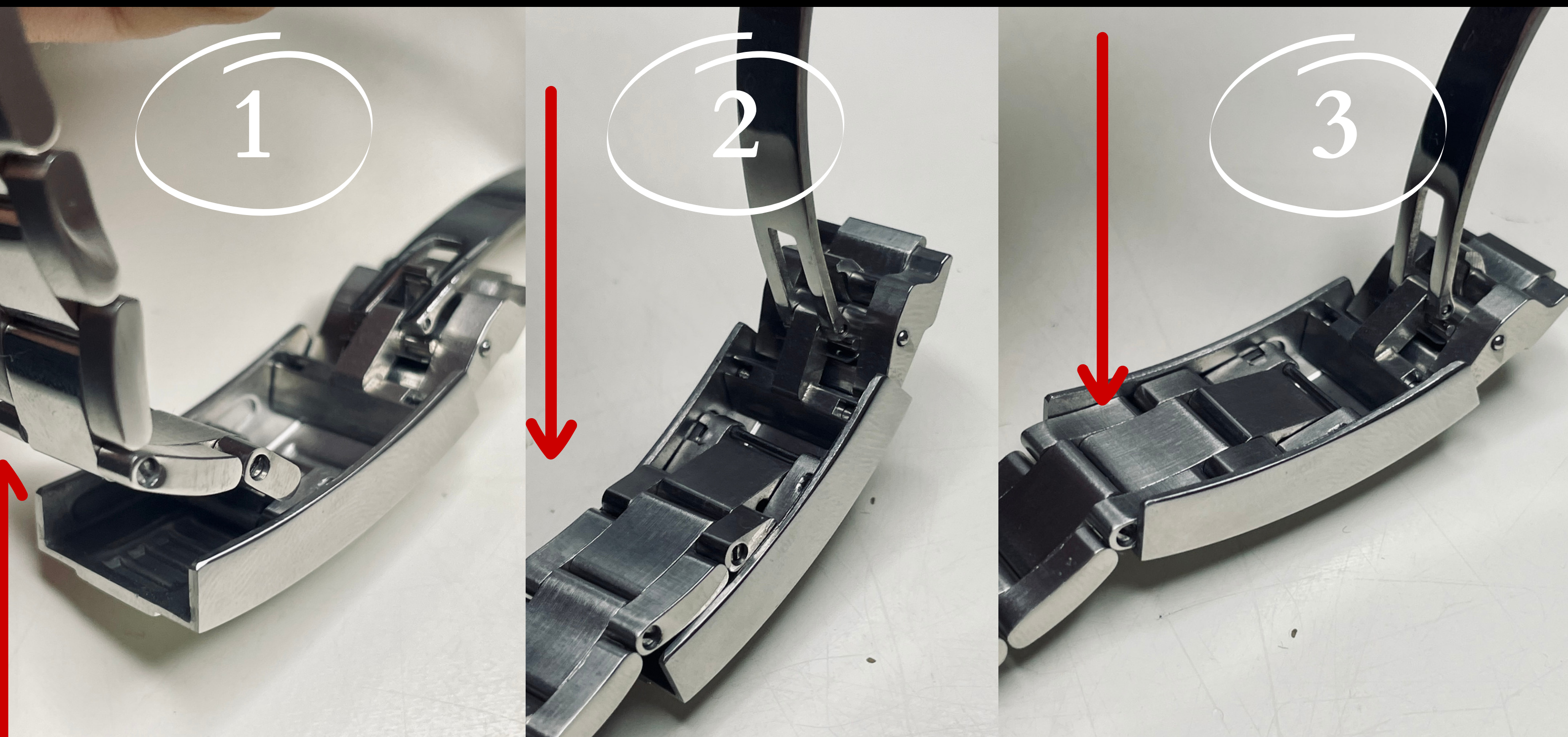
1) First, you need to determine how many links are excess for your wrist size, and then using the tool, remove the links by unscrewing the screws.



# OYSTER/JUBILEE

## SECOND METHOD

This is the fastest method. Perhaps by removing screws, it may not fit exactly as desired. So, you can combine both methods for a perfect fit.



- 1) First, you need to pull up forcefully on the link closest to the clasp until it lifts up.
- 2) Now you can move it inward into the clasp to adjust the size.
- 3) Once you have adjusted the size, you should firmly push the link back into the clasp.
- 4) Repeat process backwards to add pin back onto the bracelet.



# NAUTILUS

## 1) LOCATE THE CORRECT SIDE OF THE PIN

Remove the removable pin link from the smooth side only.

DO NOT remove pin from side with the notch.



## 2) PIN REMOVAL

Align pin removal tip with the smooth side face of the pin.

Slowly turn the knob until the pin head pushes out the other side. Using your fingertips, pull the rest of the pin out.

Repeat process backwards to add pin back onto the bracelet.

